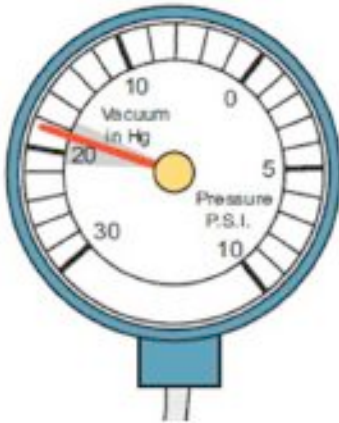


Name \_\_\_\_\_

**MULTIPLE CHOICE. Choose the one alternative that best completes the statement or answers the question.**

- 1) Engine oil pressure at 3500 RPM should be at least \_\_\_\_\_ PSI. 1) \_\_\_\_\_  
A) 10  
B) 25  
C) 35  
D) 42
- 2) Technician A says that the first step in diagnosing engine condition is to perform a thorough visual inspection. Technician B says that oil leaks can be found by measuring straight up from where the oil drips on the floor. Who is right? 2) \_\_\_\_\_  
A) Technician A only  
B) Technician B only  
C) Both technicians  
D) Neither technician
- 3) Which of these smoke colors indicates excessive fuel being burned in the combustion chamber? 3) \_\_\_\_\_  
A) Blue  
B) Black  
C) White  
D) Grey
- 4) As with cranking compression, the running compression pressure at idle of all cylinders should be equal and \_\_\_\_\_ the cranking compression readings. 4) \_\_\_\_\_  
A) higher than  
B) lower than  
C) the same as  
D) the same as or higher
- 5) A technician is performing a cylinder leak test. The leakage on all cylinders is less than 10% on all cylinders except for one, which indicates 80% leakage. What should the technician do? 5) \_\_\_\_\_  
A) Replace the piston rings on the 40% cylinder.  
B) Grind the valves.  
C) Repeat the test (cylinder was not at TDC).  
D) Replace the head gasket.

6) The vacuum reading shown was taken from an engine at idle speed. The reading indicates that \_\_\_\_\_ 6) \_\_\_\_\_



- A) The timing is retarded.
- B) The engine is in good mechanical condition.
- C) A valve is out of adjustment.
- D) The idle speed is too low.

7) The low oil pressure warning light usually comes on \_\_\_\_\_ 7) \_\_\_\_\_

- A) whenever an oil change is required
- B) whenever oil pressure drops dangerously low (4 to 7 psi)
- C) whenever the oil filter bypass valve opens
- D) whenever the oil filter anti-drain back valve opens

8) A smoothly operating engine depends on \_\_\_\_\_ 8) \_\_\_\_\_

- A) high compression on most cylinders
- B) equal compression between cylinders
- C) cylinder compression levels above 100 psi (700 kPa) and within 70 PSI (500kPa) of each other
- D) compression levels below 100 psi (700 kPa) on most cylinders

9) Two technicians are discussing oil leaks. Technician A says that an oil leak can be found using a fluorescent dye in the oil with a black light to check for leaks. Technician B says that a white spray powder can be used to locate oil leaks. Who is right? 9) \_\_\_\_\_

- A) Technician A only
- B) Technician B only
- C) Both technicians
- D) Neither technician

10) Technician A says that a leaking head gasket can be tested for by using a chemical tester. Technician B says that a leaking head gasket can be found using an exhaust gas analyzer. Who is correct? 10) \_\_\_\_\_

- A) Technician A only
- B) Technician B only
- C) Both technicians
- D) Neither technician

## Answer Key

Testname: AT6\_26A

1) C

Page Ref: 269

2) A

Page Ref: 257-258

3) B

Page Ref: 256

4) B

Page Ref: 264

5) C

Page Ref: 265

6) B

Page Ref: 266

7) B

Page Ref: 269

8) B

Page Ref: 261

9) C

Page Ref: 258

10) C

Page Ref: 268