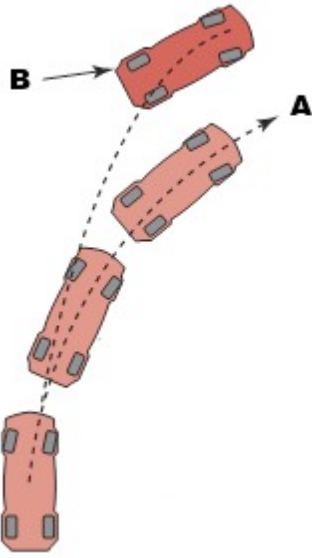


Name _____

MULTIPLE CHOICE. Choose the one alternative that best completes the statement or answers the question.

- 1) Technician A says that some vehicles with stability control systems continuously monitor wheel speed conditions and modulate hydraulic force to individual wheels to maintain stability. Technician B says that vehicles using traction control systems can reduce engine torque in slippery driving conditions. Which technician is correct? 1) _____
A) Technician A only
B) Technician B only
C) Both Technicians A and B
D) Neither Technician A nor B
- 2) A lateral acceleration sensor is usually located where in the vehicle? 2) _____
A) Under the front seat
B) In the center console
C) On the package shelf
D) Any of the above locations
- 3) A driver has turned off the vehicle's stability control system. What will happen when the vehicle is next started? 3) _____
A) The stability control system will remain off
B) The stability control system will default to "ON"
C) The system will remain off until the battery is disconnected
D) The system will remain off until the ABS fuse is removed
- 4) Which sensor is used by the ESC controller to determine the driver's intended direction? 4) _____
A) Yaw sensor
B) Steering wheel (handwheel) position sensor
C) Vehicle speed (VS) sensor
D) Lateral acceleration sensor
- 5) What is the name of the standard test that is performed to verify ESC operation? 5) _____
A) ESC plus
B) Vehicle stability enhancement test
C) Sine with dwell
D) Anti-skid test
- 6) A diagnostic trouble code (DTC) has been set for a fault with the lateral acceleration sensor or circuit. What test could be performed to check if the sensor is working? 6) _____
A) Unplug it and see if the scan tool reads 1.0 G
B) Disconnect the sensor and hold it sideways to see if the scan tool reads 0.0 G
C) Disconnect the sensor and hold it sideways to see if the scan tool reads 1.0 G
D) Drive the vehicle in a circle to see if the scan tool reads 0.0 G

7) In this drawing, the vehicle's intended track is "A". If driven a little too fast, the actual track is "B". This condition is known as _____.



- A) Understeer
- B) Oversteer
- C) Delayed steer
- D) Left hand drift

8) During a traction control event, which of the following strategies is usually applied first? 8) _____

- A) Reduce engine torque
- B) Apply the drive wheel brakes
- C) Either A or B depending on conditions
- D) Neither A nor B

9) Which Federal Motor Vehicle Safety Standard requires electronic stability control to be on all vehicles by 2011? 9) _____

- A) 126
- B) 113
- C) 109
- D) 101

10) Technician A says that traction control is available if a rear-wheel drive vehicle is equipped with an RWAL brake system. Technician B says that hydraulic pressure from the electrohydraulic unit supplies brake fluid pressure to the wheel brake that is spinning during a traction control event. Which technician is correct? 10) _____

- A) Technician A only
- B) Technician B only
- C) Both Technicians A and B
- D) Neither Technician A nor B

Answer Key

Testname: AAEE_25B

1) C

Page Ref: 367

2) D

Page Ref: 366

3) B

Page Ref: 362

4) B

Page Ref: 364

5) C

Page Ref: 363

6) C

Page Ref: 365

7) A

Page Ref: 363

8) A

Page Ref: 367

9) A

Page Ref: 363

10) B

Page Ref: 366