

Name \_\_\_\_\_

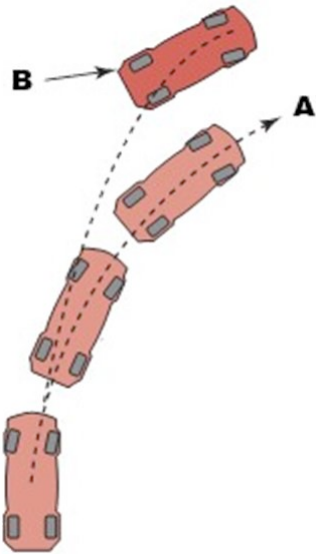
**MULTIPLE CHOICE. Choose the one alternative that best completes the statement or answers the question.**

- 1) A diagnostic trouble code (DTC) has been set for a fault with the lateral acceleration sensor or circuit. What test could be performed to check if the sensor is working?
  - A) Unplug it and see if the scan tool reads 1.0 G
  - B) Disconnect the sensor and hold it sideways to see if the scan tool reads 0.0 G
  - C) Disconnect the sensor and hold it sideways to see if the scan tool reads 1.0 G
  - D) Drive the vehicle in a circle to see if the scan tool reads 0.0 G
  
- 2) The driver of a vehicle with ESC has turned OFF the stability control system. What will happen the next time the vehicle is driven?
  - A) The ESC system will remain OFF until turned back on by the driver.
  - B) The ESC system will return to its default ON status.
  - C) It will depend on which driver of the vehicle enters the vehicle.
  - D) None of these
  
- 3) The hand wheel position sensor is located \_\_\_\_\_.
  - A) in the air bag clock spring
  - B) in the steering column
  - C) on the steering rack assembly
  - D) under the driver's side carpet
  
- 4) A traction control system can often control all of these EXCEPT \_\_\_\_\_.
  - A) limit torque delivered to the drive wheels
  - B) engage four-wheel drive
  - C) upshift the transmission
  - D) apply the wheel brake to the wheel that is losing traction
  
- 5) Traction control is being discussed. Technician A says that the computer locks both drive wheels together when one drive wheel starts to slip. Technician B says that first the brakes are applied, and then the engine power is reduced. Which technician is correct?
  - A) Technician A only
  - B) Technician B only
  - C) Both technicians A and B
  - D) Neither technician A nor B
  
- 6) Some antilock braking systems use a yaw sensor for the ESC system. Where could this sensor be mounted?
  - A) In the front of the vehicle near the radiator
  - B) Attached to or near the brake pedal assembly
  - C) On the master cylinder
  - D) Inside the vehicle under a seat
  
- 7) The steering wheel position sensor provides signals related to steering wheel position and size.
  - A) True
  - B) False

8) During a traction control event, which of the following strategies is usually applied first?

- A) Reduce engine torque
- B) Apply the drive wheel brakes
- C) Either A or B, depending on conditions
- D) Neither A nor B

9) In this drawing, the vehicle's intended track is "A." If driven a little too fast, the actual track is "B." This condition is known as \_\_\_\_\_.



- A) understeer
- B) oversteer
- C) delayed steer
- D) left hand drift

10) A flashing ESC lamp indicates a problem with the ESC system.

- A) True
- B) False

## Answer Key

Testname: ASSA8\_11A

1) C

Page Ref: 205

2) B

Page Ref: 202

3) B

Page Ref: 204

4) B

Page Ref: 207

5) D

Page Ref: 206

6) D

Page Ref: 205

7) B

Page Ref: 204

8) A

Page Ref: 207

9) A

Page Ref: 201

10) B

Page Ref: 201